

Seahorse XFp Cell Mito Stress Test Kit



6 tests

Rating: Not Rated Yet

Price

Sales price 3274 ?

Discount

On Order



[Ask a question about this product](#)

Manufacturer [Seahorse](#)

Description

The Seahorse XFp Cell Mito Stress Test kit is an optimized solution for assessing mitochondrial function. Multiple parameters are obtained in one assay, including: basal respiration, ATP production-coupled respiration, maximal and reserve capacities and non-mitochondrial respiration. The assay provides insight into the mechanism of mitochondrial dysfunction and allows to investigate functional differences among cell types, drug candidates, as well as genetic or biochemical interventions.

The assay measures basal respiration, ATP-linked respiration, H+ (Proton) leak, maximal respiration, spare respiratory capacity, and non-mitochondrial respiration using modulators of cellular respiration.

Compounds are reconstituted directly in assay medium – eliminating the need for DMSO or other solvents.

Kits are rigorously tested and validated for every lot with cells to deliver consistent and robust results – eliminating the cost associated with failed experiments.

Data analysis tool, the Seahorse XF Report Generator, is provided to simplify and transform raw data into organized, shareable summary reports anyone can understand.

[Download Seahorse XF Cell Mito Stress Test Report Generator](#)

[Learn more about Mitochondrial Respiration](#)

For Research Use Only. Not for use in diagnostic procedures.

Component	Description
Kit Contents	6 Pouches per kit Each pouch contains 1 each of Oligomycin, FCCP and Rotenone/Antimycin A
Number of Assays	6x 8-well assays
Shipping Conditions:	Ambient temperature
Storage Requirements	Room temperature
Kit part number	For platform(s)
103010-100	XFp Analyzers

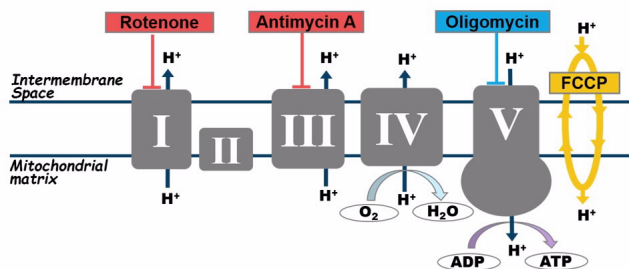
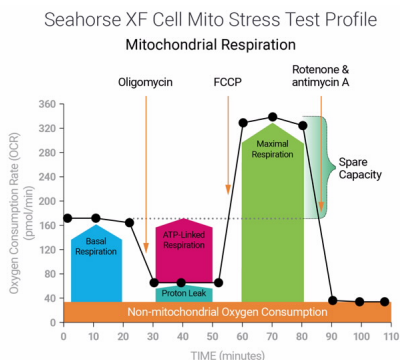
Agilent Seahorse XF media is specially formulated for use in XF assays, and is recommended for best results.

For more information on XF media and buffer products view the [selection guide](#).

orks

Gain a comprehensive view on mitochondrial function

This assay is the gold standard for measuring mitochondrial function. Researchers use this critical assay to advance their understanding of cell physiology, disease pathology, and etiology. The assay reports multiple key parameters, including basal respiration, ATP-linked respiration and spare respiratory capacity (SRC). The SRC metric is often used to evaluate the cells ability to meet an energetic challenge as cells go through activation, differentiation and/or proliferation, and has been implicated in cell fate determination.



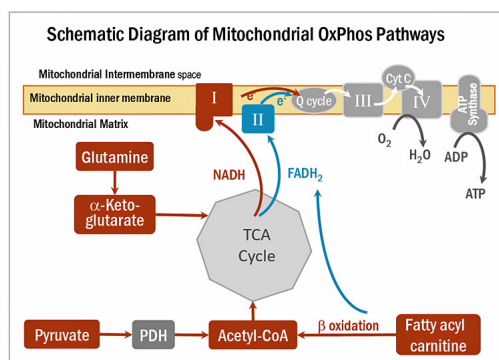
Examine fundamental parameters with well established tool modulators

The protocol involves 3 serial injections of oligomycin, FCCP, and rotenone/antimycin A. An acute injection of a test compound for assessing its effect on mitochondrial function can also be administrated prior to the injection of these modulators.

Dive deeper to understand mechanism or fuel dependency

Mitochondrial function can be further characterized by assessing the impact of substrate (fuel) dependency. Check [XFp Mito Fuel Flux Test](#) and [XF Palmitate-BSA](#) to find out what you can do next.

Individual complex function in mitochondrial electron transport chain can be assessed using XF Plasma Membrane Permeabilizer. [Click here](#) to learn more.



Reviews

There are yet no reviews for this product.